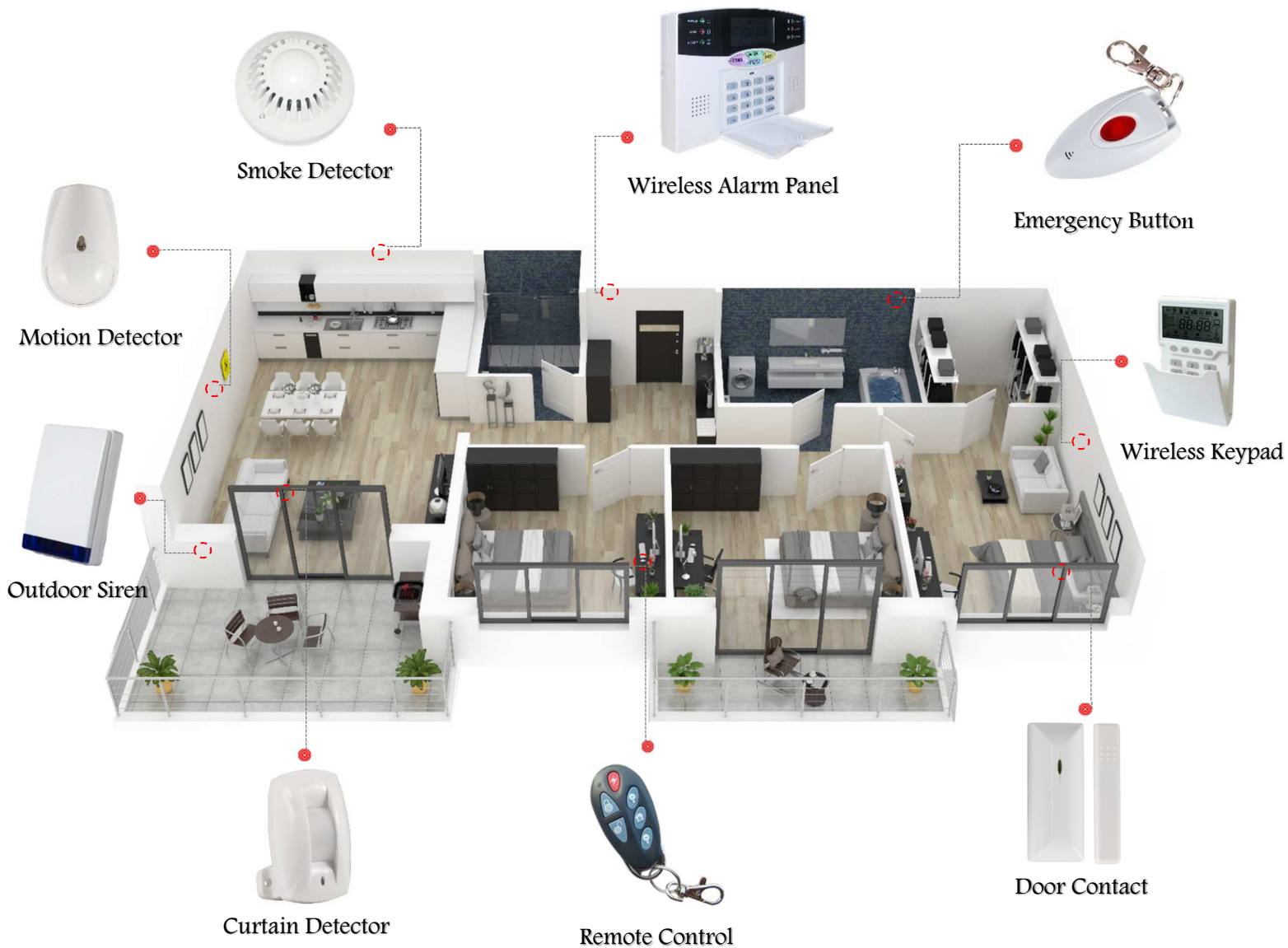


FC-300

Wireless Alarm System



FC-300 alarm system which offers an innovative all-in-one solution, with all aspects of security and connectivity a wide range of wireless accessories to provide a comprehensive high level of safety control that enables users to conveniently manage the systems in home or office environment .

It promotes peace of mind by combining industry-leading intrusion enables homeowners to verify the status of the system, reprogram security functions, remotely arm and disarm the security alarm from cellular phone anywhere and any time

Introduction: FC-300 Wireless Alarm Panel



System Kit Come With.

- 1 x FC-300 Alarm Control Panel
- Built-in Siren with support 32 wireless zones
- 1 x Wireless Door Contact
- 1 x Wireless Motion Detector
- 2 x Wireless Key Fob
- 1 x 7.2v Back-up Battery
- 1 x User Manual



Total programmable 32 wireless & 8 wired zones Enable learn code automatically or manually on the keypad.



Programmable 2 CMS numbers, 4 phone numbers; 10 secs voice record.



Enable record and inquiry 120 alarm event messages



Vandal- proof triggered function: If try cut off the wire / tel line which connect to the panel



Postposition concentration lead line for safety and preventing vandalism



Timing arm / disarm: Enable set 4 group time arm / disarm time.



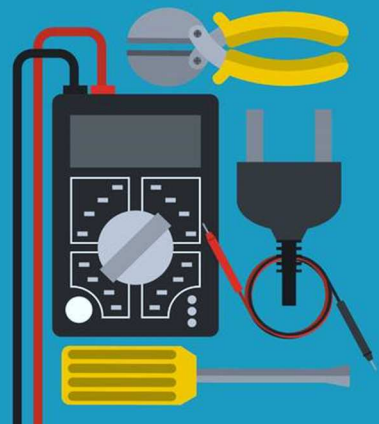
Built - in siren, it can also enrol extension siren. Both can be settled on/ off when alarming.



The panel dials pre-set follow me number to report alarm message



Voice indication volume enable adjust on the switch.



Electric Parameters.

Power: Input 100V-240VAC 50/60HZ Output: 12VDC 1A

Backup Battery Capacity: 7.2V/500mAh

Static Current: <40mA@12V

Siren Output: <400mA

Working Temperature: -20°C ~ 60°C

Working Humidity Maximum: 85% RH

Dimensions: 166 x 115 x 30mm

Introduction: Wireless Alarm Accessories



MD-210R
Wireless Door Contact

Transmitting Range: Inset 150m
Working Voltage: 3V lithium battery
Working Temperature: -10°C~50°C
Dimension: 81x 32x 25mm
Magnetic: 74.5x 13.5 x 18.8mm



MC-335R
Wireless Motion Detector

Detection Range: 9m (25°C)
Transmit Range: 120m-150m
Power Voltage: 3V DC lithium battery
Static Current: <9uA
Max Coverage Area: 9m*12m /90°



DM-448R DMT
Wireless Curtain Detector

Detect Angle: 20°
Detect Distance: 6m/25
Transmit Distance: 150m
Input Voltage: 3VDC (2*1.5V)



MD-2100R
Wireless Smoke Detector

Power Voltage: 6 V DC
Current Static: 20Ua-40Ua, 20mA
Working Range: Max. 100m
Radiation of Sensor: Max. 4 kBq
Built in Siren: 95dB/1m



PB-403R
Wireless Remote Control

Detecting Range: 100m
Power Voltage: 5.8V-7V. CR2032*2
Temperature: -10°C ~ 50°C
Size: 66.5 x 31.5x 10.5mm
Weight: 22g



PB-201R
Wireless Emergency Button

Effective Area: 100m
Power Voltage: 11.5-12.5V, 7A battery
Working Temperature: 10°C-50°C
Size: 65x34x17.5mm
Weight: 30g



MCS-307
PVC Outdoor Siren

Operating Voltage: 12-14 VDC
Standby Current: 350mA
Backup Battery: 9-12V 800mA
Working Temperature: -30°C ~+80°C
Dimensions: 255 x 148 x 64mm



PB-500R
Wireless Keypad

Standby Current: <0.001w
Battery Spec: 3V CR2450
Adaptor Spec: 1A DC12V
Receiving Distance: 80meters
Working Temperature: -10°C ~ +55°C